



Customer: Windy City Organics
Customer Sample ID: Veggimins CBD Hemp Cream 350mg - Lot # AV485
Laboratory Number: 2010108-01
Servings per Container: 56.699



Cannabinoid Profile

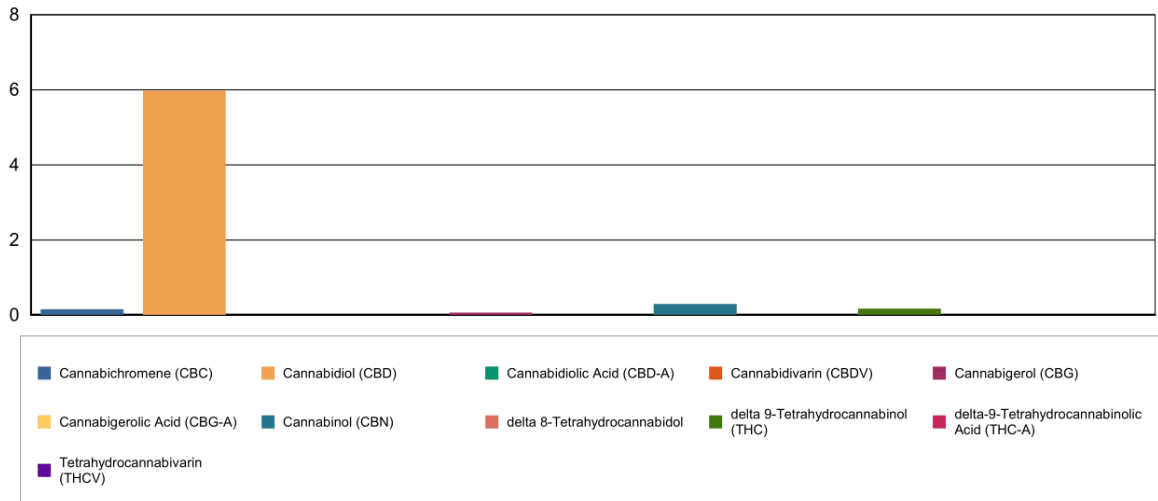
Extraction Technician: DF
Analytical Chemist: CB

Extraction Date(s)	Analysis Date(s)
9/8/2020	9/9/2020

Cannabinoids (HPLC)		Results		
	LOD (mg/g)	%	mg/g	mg/container
Cannabidivarin (CBDV)	<0.040			
Cannabidiolic Acid (CBD-A)	<0.040			
Cannabigerolic Acid (CBG-A)	<0.040			
Cannabigerol (CBG)		0.006	0.061	3.46
Cannabidiol (CBD)		0.62	6.19	351
Tetrahydrocannabivarin (THCV)	<0.040			
Cannabinol (CBN)		0.03	0.295	16.7
delta 9-Tetrahydrocannabinol (THC)		0.02	0.173	9.80
delta 8-Tetrahydrocannabidol	<0.040			
Cannabichromene (CBC)		0.01	0.150	8.49
delta-9-Tetrahydrocannabinolic Acid (THC-A)	<0.040			
Cannabinoids Total		%	mg/g	
Max Active THC		0.02	0.17	
Max Active CBD		0.62	6.19	
T.Active Cannabinoids		0.69	6.87	
Total Cannabinoids		0.69	6.87	

Following USDA guidelines on uncertainty, Altitude Consulting's uncertainty are calculated for CBDa and CBD at +/- 4%. The uncertainty for THCa and THC are +/- 5%. This implies the range for a 10% value of CBD to be 9.6-10.4%. The uncertainty range for a 0.30% value of THC would be 0.28-0.32%.

Cannabinoid (mg/g)



Reporting Limits will vary based on sample extraction weight used for the analysis.
 Altitude Consulting, LLC utilizes NIST traceable Reference Standards and Certified Reference Material to calibrate analytical instruments along with proven analytical methods. The methods are applied in the most ethical manner following good laboratory practice guidelines. The results of this report are based solely on the sample submitted and cannot be reproduced.